

Edition 04/2008  
Replace Ed. 11/2006

# Plant Peptone ET1 19725

## Definition

Plant Peptone ET1 is manufactured by a controlled enzymatic hydrolysis of potato proteins.

## Description

Fine cream powder.

Plant Peptone ET1 contains a mix of peptides and free amino acids.

Plant Peptone ET1 is manufactured with raw materials from vegetal origin only.

## Use

Source of organic nitrogen and growth factors recommended in media for industrial fermentation.

## Physico-chemical characteristics

	Standard
Solubility in water at 1 %	Partial
pH ( 1 % solution)	6,6 - 7,6
Loss on drying	≤ 6.0 %
Total nitrogen TN	10,0 - 11,0 %
α-amino nitrogen AN	3,4 - 4,4 %
AN/TN x 100	32 - 42
Residue on ignition	≤ 22,0 %
Chloride (as NaCl)	≤ 15,0 %

## Microbiology

	Standard
Total aerobic microbial count	≤ 10 000 /g
Coliforms	≤ 10 /g
<i>Escherichia coli</i>	Absence / g
<i>Salmonella</i>	Absence / 25 g
<i>Staphylococcus aureus</i>	Absence / 10 g
Yeasts and moulds	≤ 20 /g



## Organotechnie® S.A.S.

27, avenue Jean Mermoz  
93120 La Courneuve, France  
Tél : +33 (0) 1 49 92 87 50  
Fax : +33 (0) 1 49 92 87 51

e-mail : [info@organotechnie.com](mailto:info@organotechnie.com)  
web : <http://www.organotechnie.com>



Les informations contenues dans ce document, données à titre indicatif, sont conformes à nos connaissances actuelles.

Il est de la responsabilité des utilisateurs de conduire leurs propres tests pour déterminer les conditions d'utilisations selon leurs usages spécifiques.

The information contained in this publication is based on our own research and development work and is to the best of our knowledge true and accurate.

Users should, however, conduct their own tests to determine the suitability of our products for their own specific purposes.

Statements contained herein should not be considered as a warranty of any kind, expressed or implied, and no liability is accepted for the infringement of any patents.

# Plant Peptone ET1 / 19725

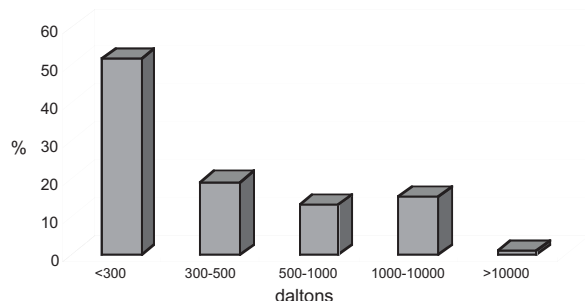
Edition 04/2008  
Replace Ed. 11/2006



Organotechnie S.A.S.

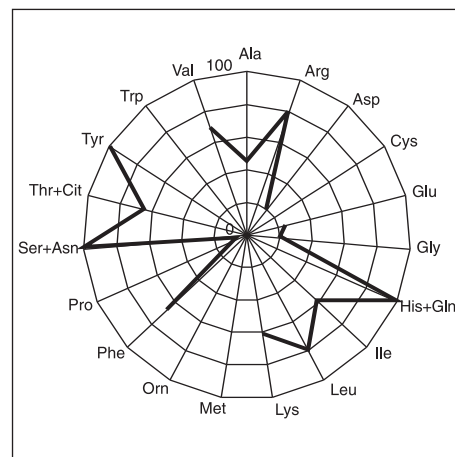
## Typical data

Molecular weight distribution	g / 100 g
> 10 000 daltons	1,2
1 000 - 10 000 daltons	15,1
500 - 1 000 daltons	13,0
300 - 500 daltons	19,1
< 300 daltons	51,6



Molecular weight distribution

Amino Acids		Total - T (g/100 g)	Free - F (g/100 g)	F/T x 100
Alanine	Ala	2,2	1,0	43,6
Arginine	Arg	2,4	1,9	79,1
Aspartic Acid	Asp	5,5	1,1	19,5
Cysteine	Cys		0,0	-
Glutamic acid	Glu	5,2	1,3	25,8
Glycine	Gly	2,3	0,5	20,7
Histidine + Glutamine	His + Gln	1,1	1,1	100,0
Isoleucine	Ile	2,6	1,5	59,0
Leucine	Leu	4,4	3,5	80,3
Lysine	Lys	3,5	2,2	61,6
Méthionine	Met	-	0,7	-
Ornithine	Orn	-	0,1	-
Phénylalanine	Phe	2,6	1,8	66,7
Proline	Pro	2,4	0,2	6,3
Sérine + Asparagine	Ser + Asn	2,4	2,4	100,0
Thréonine + Citruline	Thr + Cit	2,5	1,6	63,6
Tyrosine	Tyr	1,8	1,8	100,0
Tryptophane	Trp	-	0,3	-
Valine	Val	3,0	2,1	69,0



Amino Acids F/T x 100

## Documentation

The certificate of analysis and the sanitary certificate are supplied with each delivery.

## Packing and storage

25 kg net corrugated board box with inner polyethylene bags.

Upon request : 5 kg plastic drum

Keep in original packaging closed when not in use,  
at room temperature in a dry area.

Hygroscopic product.

Best before : 3 years (under validation).

## Health and safety information

Dusty powder.

Avoid inhalation.

Les informations contenues dans ce document, données à titre indicatif, sont conformes à nos connaissances actuelles.

Il est de la responsabilité des utilisateurs de conduire leurs propres tests pour déterminer les conditions d'utilisations selon leurs usages spécifiques.

The information contained in this publication is based on our own research and development work and is to the best of our knowledge true and accurate.

Users should, however, conduct their own tests to determine the suitability of our products for their own specific purposes.

Statements contained herein should not be considered as a warranty of any kind, expressed or implied, and no liability is accepted for the infringement of any patents.